



# *Remote River Expeditions*

## *~ Madagascar ~*



+ 261 32 85 293 10 | +261 34 14 285 11

Email: [info@remoterivers.com](mailto:info@remoterivers.com) | Website: [www.remoterivers.com](http://www.remoterivers.com)

## ***Madagascar: Island of Contrasts*** © ~ ***East Meets West***

**~ A combination of Rainforest, River, Sea and the West ~**

**See sample itinerary [here](#)**

Discover the best of both coasts: the exotic rainforest of the east and the unique flora and fauna of the dry western forest.

National Parks and reserves and experience the striking cultural diversity which helps answer of the question why Madagascar is known as an Afro-Asian country.



Starting in Antananarivo, the capital, we get to know the friendly Merina tribe. We explore the city; Royal Museum; markets and have our first taste of Malagasy cuisine: "Ravitoto".

Some travelers may feel themselves in Malaysia or Indonesia but this is Madagascar! The peoples of the western regions are more reminiscent of African cultures.

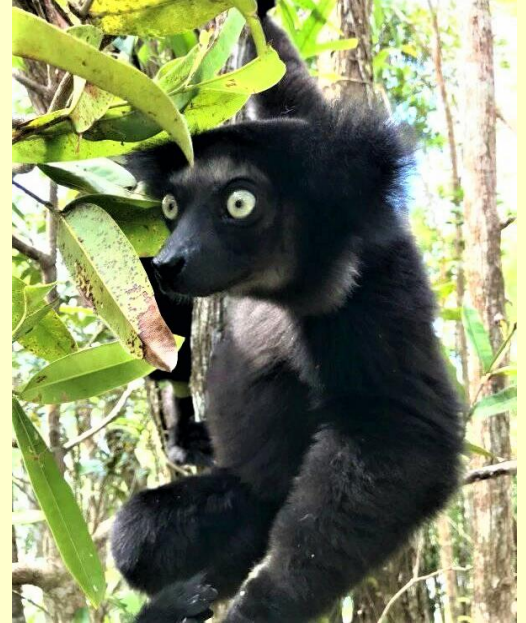


## 'East Meets West' is a Remote River Expeditions Original!

### Outside Magazine Trip of the Year: Designed by RRE

7 – 18 Day Options / Click [blue](#) links below for more information.

Depending the length of the itinerary, we include [Andasibe – Mantadia National Parks](#) just east of Antananarivo. The parks are home of the Indri (the largest living lemurs), bizarre reptiles and amphibians ([Mitsinjo Reserve](#) – frogs!) and a wide range of endemic flora and fauna.



One of the great highlights of the eastern region will be [Masoala National Park](#). We enjoy 3-4 days exploring the rainforest; nocturnal forest walks; sea kayaking; snorkeling and depending on the time of year whale watching!

In Maroantsetra we'll have the option to see the incredible **Aye Aye** at [Farankarainana Reserve](#).



We travel by boat from **Maroantsetra** on Antongil Bay to Masoala Cap passing stunning coastlines of sandy coves separated by rocky, forested headlands.

The rich biodiversity of Masoala N.P. is amazing with some 50% of Madagascar's plant **species** and more than 50% of Madagascar's mammals, birds, amphibians and reptiles found in the park.

Our lodge set where the forest meets the sea completes is out of the world!

Depending on timing and sea conditions, a stop on [Nosy Mangabe](#) will be another option.



After our return flight to **Antananarivo** and overnight, we begin our exploration of the Menabe (Western) Region.

The stark contrasts with the east become apparent immediately. The scenery, climate and people change dramatically and especially notable are the changes with dry deciduous forests and wildlife.

We travel overland to **Miandrivazo** (for Tsiribihina River) or to **Ankavandra** (for Manambolo River). Using a charter flight is also an option.



With the river option we enjoy the calm water float; huge sandy beaches for camping; cultural exchange during village visits and beautiful side stream waterfalls.

One of the many highlights of the west is the famous **[Tsingy de Bemaraha National Park](#)**.

A UNESCO World Heritage Site. There is no place like it in the world!

Almost indescribable the park gives the impression of **"Jurassic Park"** and traveling back at a time.



From the Tsingy we drive south to the [Kirindy Forest Reserve](#). An extremely rich reserve with a great birds and a wide range of endemic flora and fauna including the giant jumping rat and the Fosa.

Our **'Contrasts'** adventure is complete with visit the world-famous [Avenue of the Baobabs](#) at **sunset**. Visits to the Mangroves of Morondava and a Vezo fishing village are also options. We spend our final night in the west at a beach hotel on the Mozambique Channel.



**Morondava** is a wonderfully friendly, safe, and relaxed town. The Chez Maggie Hotel is located at **Nosikely** where the 'mora mora' ('slowly slowly') spirit is alive and well.

[Chez Maggie Hotel & Restaurant](#) is a romantic hide-away in a comfortable setting directly on the beach; on the Mozambique Channel.

Features: 2-Story Chalets & spacious bungalows; air-conditioning; superb food; full service bar; Wi-Fi; swimming pool and wondrous sunsets



Trip Advisor Certificate of Excellence  
Winner: 2012, 2013, 2014, 2015 & 2017

Travelers Choice Award 2022

### *Customize as You like*

Our 'Island of Contrasts' itinerary offers an excellent overview of many of the wonders of the island. We're happy to discuss, arrange and modify for any and all special interests, and according to the amount of time available.

Our multi-activity itineraries range from 7 to 18 days. We often include several national parks, and extended tours including: [Andasibe – Mantadia & Tsingy de Bemaraha N.P.](#)

One excellent option is quality 'beach time' and snorkeling in picturesque seaside village of [Belo sur Mer](#).



Like & Follow



Read Reviews

LinkedIn



Scan & Mail us